

Save Time. Work Smarter. Sell More.

# AutoLimited Access™ for Act!

Ease the pain and reduce the complexity of using Limited Access

Do you need to use limited access in your database but find it cumbersome to maintain?

Now you can set up limited access and have rules that will automatically be applied.

## KEY FEATURES:

- ◆ Automatically and accurately controls limited access at the point of data entry.
- ◆ Uses Contact, Company, and Group fields to trigger access rules.
- ◆ Use the Professional version to do territory alignment and command line automation.

## OTHER GREAT ACT! ADD-ONS FROM ASDS COMPUTER

AutoAdmin - Award-winning unattended backup and maintenance of unlimited ACT! databases!

DocAdmin - Scan and attach hard copy documents as PDFs in ACT!

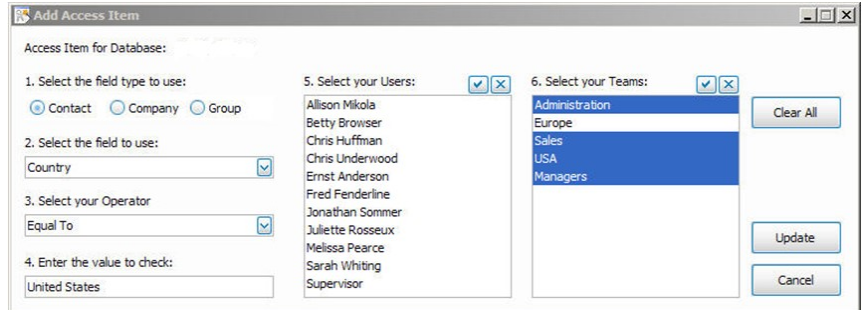
FaxAdmin - Fax directly out of ACT!

MergeAdmin - Update ACT! data from external ASCII files on a field by field level!

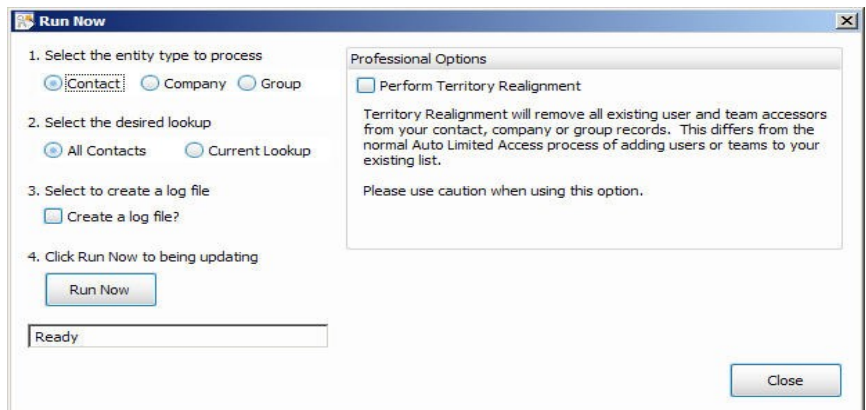
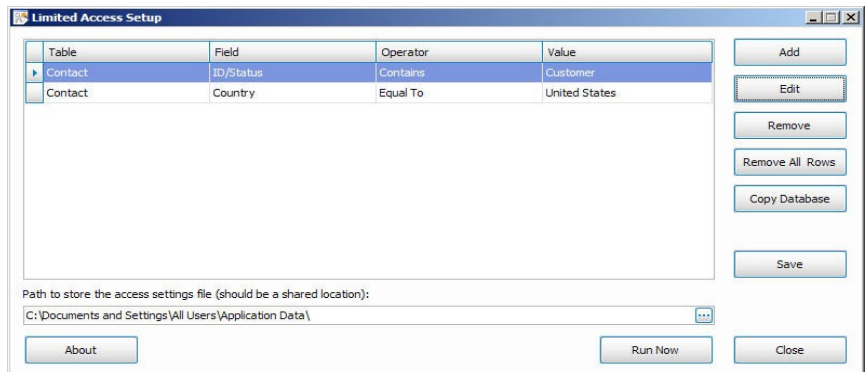
MigrateAdmin - Convert Goldmine® data to ACT! without leaving valuable information behind!

## ASDS AWARDS AND CERTIFICATIONS

- ◆ AutoAdmin is the winner of the "ACT! Vision Award" for best Add-on
- ◆ Swiftpage Software Development Partner
- ◆ Swiftpage Software Reseller
- ◆ SWIFTPAGE ACT! Certified Consultant



Auto Limited Access rules are "cumulative." Each one will add to the list of the current Accessors.



### Territory Realignment

When you purchase the "Professional Version" of Auto Limited Access, you will have a "Territory Realignment" option. This feature will REMOVE all existing user and team associations from your contact, company or group records.

act!

certified consultant

ASDS  
COMPUTER  
www.asdscomputer.com

ASDS Computer Company • PMB 404 • 10343 Federal Blvd, Unit J • Denver, CO 80260-7469  
Voice: (303) 465-6465 x2 • Fax: (303) 465-2768 • Email: info@asdscomputer.com  
30 DAY MONEY-BACK GUARANTEE • FREE TRIAL

Swiftpage ACT!® is a registered trademark of Swiftpage. All other brands are the property of their respective owners.

© Copyright 2017. ASDS Computer Company